



INSTALLATION GUIDE

Tech Support 856-768-5700 Ext. 2 • TechSupport@LEDGlow.com

Single Color SMD LED Grille Lighting Kit

Please check your state and local laws before installing this LED grille lighting kit. Every state has different policies and procedures regarding aftermarket vehicle accessories. LEDGlow is not responsible for any fines that you may receive while using this grille kit. This kit is for off-road use only. We recommend using a licensed professional for installation. The improper installation of this kit will void all warranties.

PLEASE READ THE FOLLOWING INSTRUCTIONS THOROUGHLY BEFORE INSTALLING AND OPERATING THIS LED GRILLE KIT.

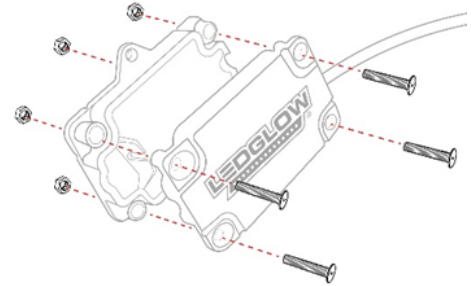
Grille Kit Includes:

- 24 Inch SMD Tube
- Control Box
- 4 Button Wireless Remote
- Distributor Cable
- 15 Degree Angled Tube Brackets
- Zip Ties
- Screws

The control box must be installed in a dry location! Having this part exposed to water or the elements will cause the kit's controller to fail. Any water damage or corrosion to the control box will VOID all warranties.

Grille Installation:

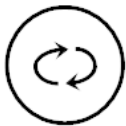
1. Disconnect the vehicle's negative side of the battery.
Optional: Raise and support the vehicle.
2. Mock up the Grille Tube to the area you plan to install to ensure proper fitment.
3. Mount the Grille Tube using the included mounting brackets and screws. Make sure the tube is at least 8 inches away from any direct heat source and away from all moving parts. Use the included zip ties to secure the tube to the mounting brackets.
Caution: Please be aware of the location of the radiator and cooler lines. DO NOT DRILL ANY HOLES OR ATTACH THE MOUNTING BRACKETS TO THE RADIATOR.
4. Mount the control box in a safe and secure location inside of your vehicle.
5. Connect the distributor cable to the control box. If you plan to mount the distributor cable under your hood, run the lead wire through a pre-existing hole with a grommet in your firewall and then to the control box. If you do not have a pre-existing hole in the firewall, you can drill one. Please be sure to use a rubber grommet to ensure the lead wire is not cut or pinched.
Caution: DO NOT SHORTEN OR CUT THE GRILLE TUBE WIRES. This will void all warranties. Optional wire extensions are available at LEDGlow.com (Pictured to the Right)
6. **Select your Power Option:**
 - Option 1- Hardwire Installation:**
 - Connect the red power wire to a positive 12-volt source, such as your positive battery terminal. If the wires are not long enough, extend them using 16 or 18-gauge automotive-grade wire and relocate the in-line fuse within 6" of the battery.
 - If you are running the power wire to the battery, it must go through the firewall by using an existing grommet or by drilling a hole and adding a new grommet, which is available at any auto parts store.
 - We recommend running the power wire to a constant 12-volt source for pattern recall. If you connect the power wire to a switched 12-volt source, the LED Grille Kit will reset each time.
 - Do not run the wire through the door jamb. The wire can be pinched and will void all warranties.
 - Option 2- Fuse Box Installation:**
 - Power this kit directly from your vehicle's fuse box using an LEDGlow Expandable Circuit, which is available at LEDGlow.com.
7. Connect the black wire to a reliable, unpainted, clean ground source, such as under the dash at any main bracket or grounding block, to the negative post on your battery, or any engine ground.
8. Plug the Grille Light into one of the three 6-pin ports on the distribution cable. The other six ports will not be used.
9. Find a safe and secure location to mount the distributor cable.
10. Lower the vehicle if it was raised.
11. Reconnect the negative side of the battery and test the LED Grille Kit for full functionality.





Tech Support 856-768-5700 Ext. 2 • TechSupport@LEDGlow.com

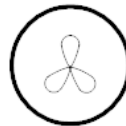
Using the Control Box & 4 Button Wireless Remote



Mode Button

Pressing this button on the control box or wireless remote allows you to change the current pattern displayed on your kit. There are 12 distinct patterns, as well as 5 unique sound activation modes. The patterns are listed below:

- Solid Illumination Mode
- Flashing Mode
- Flashing Front Chase
- Flashing Back Chase
- Steady Front Chase
- Steady Back Chase
- Front Running Chase Mode
- Back Running Chase Mode
- Outside to Inside Flash
- Inside to Outside Flash
- Flash Pattern
- Flash Pattern
- (5) Optional Sound Activation Modes

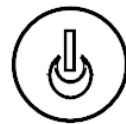


Changing Color Button (Not Applicable)



Speed Change Button

Pressing this button on the control box or wireless remote will allow you to select from 5 different speeds for your selected pattern. This button will also adjust the sensitivity of the selected mode.



Power Button

Pressing this button on the control box or wireless remote will turn your kit on and off.

Adding or Replacing Your Wireless Remote:

The included wireless remote is pre-programmed. This setup is only needed when replacing an existing remote or when adding additional remotes to your system. You may program up to 3 remotes to each control box.

- In order to program the remote to the control box, you must turn the kit off and simultaneously press and hold the mode button on the remote and the mode control box on the control box for 5-7 seconds. Test the operation with the remote. Pressing this button on the control box or wireless remote will turn your kit on and off.

For accessories, replacement parts and/or technical support please visit www.LEDGlow.com for more information

ONE YEAR NON-TRANSFERABLE LIMITED WARRANTY AND DISCLAIMER



INSTALLATION GUIDE

Tech Support 856-768-5700 Ext. 2 • TechSupport@LEDGlow.com

LEDGlow Lighting, LLC ("LEDGlow") warrants to the original retail consumer purchaser, and not any other purchaser or subsequent owner, that this Product will be free from defects in material or workmanship for a period of one (1) year from the purchase date. This warranty does not cover any Product that is (1) installed incorrectly, or (2) damaged by collisions, vandalism, other accidents, or similar causes.

For a period of one (1) year from the date of purchase, at no charge to the Purchaser, LEDGlow will repair or replace this Product if it is determined by LEDGlow to be defective. After the warranty period, the Purchaser must pay all charges for parts and labor.

Coverage under this warranty is only valid within the United States, including its territories, as well as in certain other countries. Purchasers should check our website, www.LEDGlow.com, to determine the warranty coverage in the countries in which they are located.

LEDGlow does not warrant the installation of the Product, which is the sole responsibility of the Purchaser. Installation should be done by licensed professionals. Improper installation may cause damage to the Product and any vehicle in which it is installed, and may cause burns and electrical injury to individuals. LEDGlow's warranty does not cover any expenses incurred in removing Products that are defective or re-installing replacement Products in their place.

During the warranty period, to have the Product repaired or replaced, the Purchaser must return the Product, freight prepaid by the Purchaser, to LEDGlow (but for customers in the contiguous United States, LEDGlow will pay the shipping charges if any Product fails during the first thirty (30) days after purchase). The Product must be returned in its original carton or in a similar package affording an equal degree of protection. LEDGlow will return the repaired or replaced Product, freight prepaid, to the Purchaser. LEDGlow does not provide Purchasers with temporary replacement units during the warranty period or at any other time.

This limited warranty is non-transferable and will automatically terminate if the original retail consumer purchaser resells the Product or transfers the vehicle on which the Product is installed. An "original retail consumer purchaser" is a person who originally purchases the Product, or a gift recipient of a new Product that is in its original packaging and unopened.

This limited warranty is subject to all of the following terms and conditions:

TERMS AND CONDITIONS

- 1. NOTIFICATION OF CLAIMS; WARRANTY SERVICE:** If Purchaser believes that a Product is defective in material or workmanship, written notice with an explanation of the claim shall be given promptly by Purchaser to LEDGlow. All warranty claims must be made within the warranty period, and any Products returned to LEDGlow must be shipped in accordance with LEDGlow's procedures (including use of RMA numbers supplied by LEDGlow after notification). The repair or replacement of any Product or part thereof shall not extend the original warranty period. The specific warranty on the repaired part only shall be in effect for a period of ninety (90) days following the repair or replacement of that part, or the remaining period of the Product warranty, whichever is greater.
- 2. EXCLUSIVE REMEDY; ACCEPTANCE:** Purchaser's exclusive remedy and LEDGlow's sole obligation is to supply (or pay for) all labor necessary to repair any Product found to be defective within the warranty period and to supply new or rebuilt replacements for defective parts. LEDGlow will refund the purchase price for such Product only if repair or replacement fails to remedy the defect. Purchaser's failure to make a claim as provided in paragraph 1 above or continued use of the Product shall constitute an unqualified acceptance of such Product and a waiver by Purchaser of all claims thereto.
- 3. EXCEPTIONS TO LIMITED WARRANTY:** LEDGlow shall have no obligation to Purchaser with respect to any Product that is subjected to any of the following: abuse, improper use, negligence, accident, modification, failure to follow the operating procedures outlined in the user's manual, failure to follow the maintenance procedures in the service manual for the Product, attempted repair by non-qualified personnel, operation of the Product outside of the published environmental and electrical parameters, or if the Product's original identification (trademark, serial number) markings have been defaced, altered, or removed. LEDGlow excludes from warranty coverage Products sold AS IS and/or WITH ALL FAULTS. LEDGlow also excludes from warranty coverage any consumable items such as fuses and batteries. All software and accompanying documentation furnished with, or as part of the Product is furnished "AS IS" (i.e., without any warranty of any kind), except where expressly provided otherwise in any documentation or license agreement furnished with the Product.
- 4. PROOF OF PURCHASE; REGISTRATION:** The Purchaser's dated bill of sale must be retained as evidence of the date of purchase and to establish warranty eligibility. Registration of any Product or of this limited warranty is voluntary, and failure to register will not diminish any rights available under this warranty.

DISCLAIMER OF WARRANTY

EXCEPT FOR THE FOREGOING WARRANTIES, LEDGLOW HEREBY DISCLAIMS AND EXCLUDES ALL OTHER WARRANTIES, EXPRESS OR IMPLIED, INCLUDING, BUT NOT LIMITED TO ANY IMPLIED WARRANTIES OF MERCHANTABILITY, FITNESS FOR A PARTICULAR PURPOSE, OR ANY WARRANTY WITH REGARD TO ANY CLAIM OF INFRINGEMENT THAT MAY BE PROVIDED IN SECTION 2-312(3) OF THE UNIFORM COMMERCIAL CODE OR IN ANY OTHER STATE STATUTE.

LIMITATION OF LIABILITY

THE LIABILITY OF LEDGLOW, IF ANY, AND PURCHASER'S SOLE AND EXCLUSIVE REMEDY FOR DAMAGES FOR ANY CLAIM OF ANY KIND WHATSOEVER, REGARDLESS OF THE LEGAL THEORY AND WHETHER ARISING IN TORT OR CONTRACT, SHALL NOT BE GREATER THAN THE ACTUAL PURCHASE PRICE OF THE PRODUCT FOR WHICH SUCH CLAIM IS MADE. IN NO EVENT SHALL LEDGLOW BE LIABLE TO PURCHASER FOR ANY SPECIAL, INDIRECT, INCIDENTAL, OR CONSEQUENTIAL DAMAGES OF ANY KIND INCLUDING, BUT NOT LIMITED TO, COMPENSATION, REIMBURSEMENT OR DAMAGES ON ACCOUNT OF THE LOSS OF PRESENT OR PROSPECTIVE PROFITS OR FOR ANY OTHER REASON WHATSOEVER.

GOVERNING LAW: This non-transferable limited warranty shall be governed by the law of the State of New Jersey, U.S.A., and the United States of America, excluding their conflicts of laws principles. The courts of Camden County, New Jersey, shall have the exclusive jurisdiction over any legal action with respect to this warranty.

This limited warranty gives specific legal rights. You may also have other rights that may vary from state to state or from country to country. Some states or countries do not allow the exclusion or limitation of incidental or consequential damages, so the above limitations and exclusions may not apply to you. You are advised to consult applicable state or country laws for a full determination of rights.